

L84M, L84C - Micro- and Oil-fog lubricator Excelon® Plus Modular System

- Port size: 3/8" ... 3/4" (ISO G/PTF)
- Excelon® Plus design allows in-line installation or modular installation with other Excelon® Plus products
- Flow sensor provides a nearly constant oil/air ratio over a wide range of flows
- Double safety lock bowl
- Light weight Polycarbonate bowl
- Metal bowl with prismatic liquid level indicator lens
- High Corrosion resistance: Body and Metal bowl with electrophoretic paint finish
- All round (360°) visibility of sightdome for ease of drip rate setting
- Choice of two oil delivery systems



Technical features

Medium:

Compressed air only

Maximum supply pressure:

Polycarbonate bowl:
10 bar (145 psi)

Metal bowl:

20 bar (290 psi)

Bowl

0,2 litre

Port size:

G3/8, G1/2, G3/4,
3/8 PTF, 1/2 PTF, 3/4 PTF

Flow:

Micro-fog : 73 dm³/s
Oil-fog: 91 dm³/s at port size:
1/2", operating pressure: 6,3 bar
(91 psi) and Δp: 0,5 bar (7.25 psi)

Start point:

0,94 dm³/s


Ambient/Media temperature:

Polycarbonate bowl:
-10 ... +60°C (14 ... +140°F)
Metal bowl:
-20 ... +65°C (-4 ... +149°F)
Air supply must be dry enough
to avoid ice formation at
temperatures below +2°C (+35°F).

Materials:

Transparent Bowl: Polycarbonate
with Polypropylene Guard.
Metal Bowl: Die cast Aluminium
with PA liquid level indicator lens
Body: Die cast aluminium
Body cover: ABS
Sightdome: Transparent PA
Bowl 'o'- ring: Chloroprene
Elastomers: NBR

Technical data L84 - standard models

Symbol	Port size	Lubricator type	Bowl	Weight (kg)	Model
	G3/8	Micro fog	Guarded polycarbonate	0,40	L84M-3GP-EPN
	G1/2	Micro fog	Guarded polycarbonate	0,40	L84M-4GP-EPN
	G3/4	Micro fog	Guarded polycarbonate	0,40	L84M-6GP-EPN
	G3/8	Micro fog	Metal with level indicator	0,53	L84M-3GP-EDN
	G1/2	Micro fog	Metal with level indicator	0,53	L84M-4GP-EDN
	G3/4	Micro fog	Metal with level indicator	0,53	L84M-6GP-EDN
	G3/8	Oil fog	Guarded polycarbonate	0,40	L84C-3GP-EPN
	G1/2	Oil fog	Guarded polycarbonate	0,40	L84C-4GP-EPN
	G3/4	Oil fog	Guarded polycarbonate	0,40	L84C-6GP-EPN
	G3/8	Oil fog	Metal with level indicator	0,53	L84C-3GP-EDN
	G1/2	Oil fog	Metal with level indicator	0,53	L84C-4GP-EDN
	G3/4	Oil fog	Metal with level indicator	0,53	L84C-6GP-EDN



Option selector

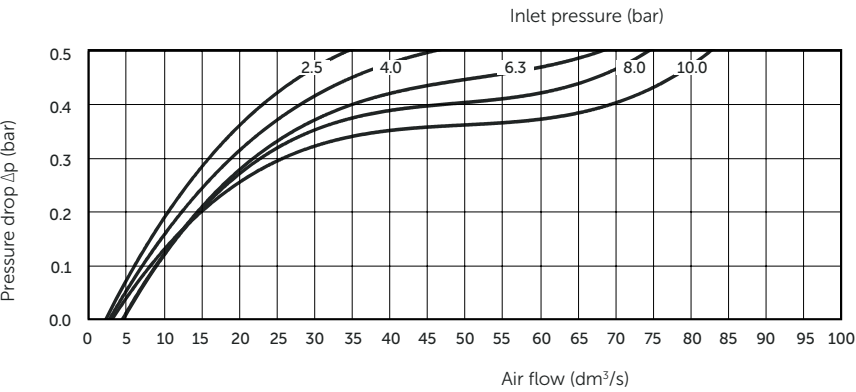
Type	Substitute
Oil fog lubricator	C
Micro fog lubricator	M
Port size	Substitute
3/8"	3
1/2"	4
3/4"	6
Thread form	Substitute
PTF	A
ISO G parallel (standard)	G

L84★-★★P-★★N

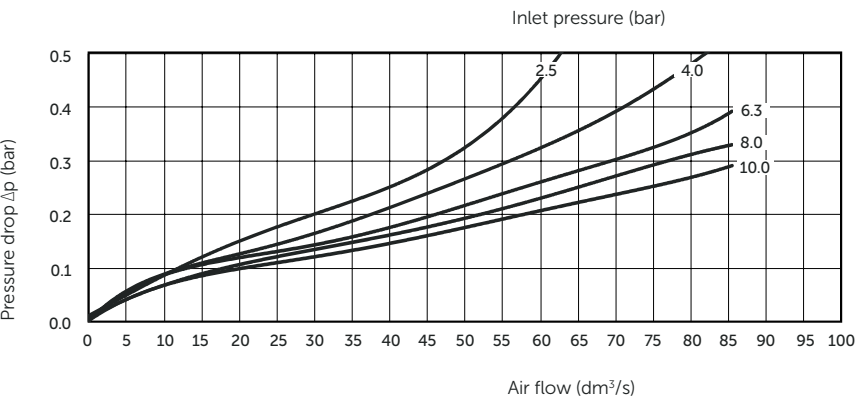
Bowl	Substitute
Metal with liquid level indicator	D
Transparent with guard (standard)	P
Drain	Substitute
None (standard)	E
Manual	Q

Flow characteristics

Micro fog
Port size: 1/2"



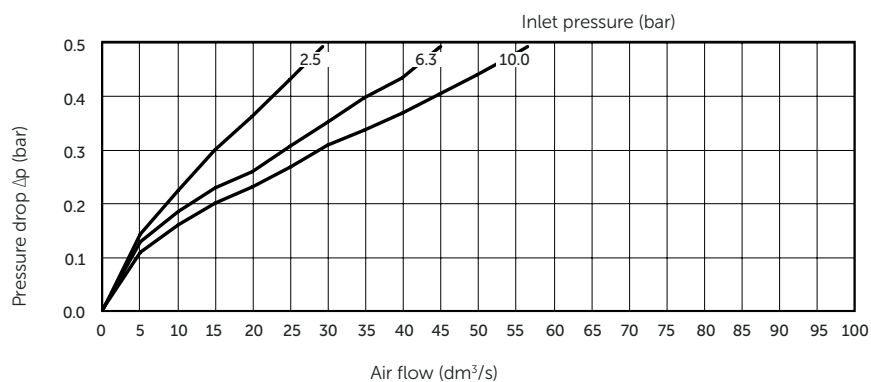
Oil fog
Port size: 1/2"



Flow characteristics

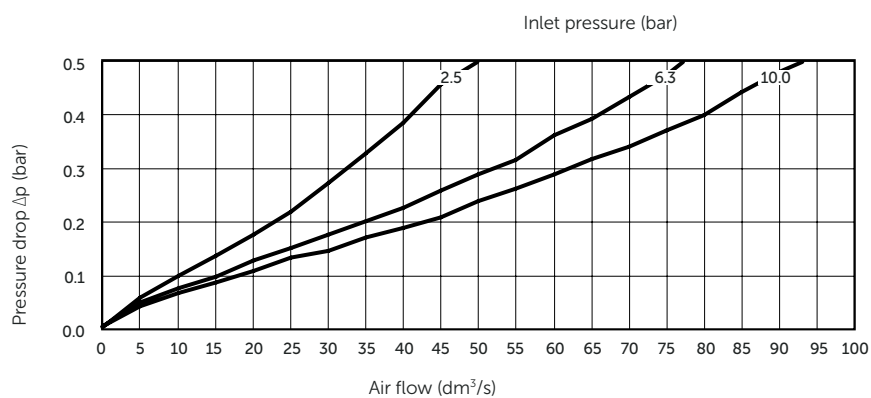
Micro fog

Port size: 3/8"



Oil fog

Port size: 3/8"



Accessories

Wall mounting bracket



Page 6

840024-50KIT

Quikclamp



Page 6

840014-51KIT

Quikclamp with bracket assembled



Page 6

840014-52KIT

Hybrid Quikclamp *1



Page 6

840014-61

Hybrid Quikclamp with bracket assembled *1



Page 6

840014-62

*1) To connect new Excelon® Plus to old Excelon® 74/73 units. Having the same hole centres as 74 series mounting bracket. A Quikclamp adds 13.6 mm to the overall width of a combination unit

Pressure sensing block 1/4 PTF



Page 6

840016-50KIT

Pressure sensing block G1/4



Page 6

840016-51KIT

Full flow porting block 3/4" PTF



Page 7

840028-50KIT

Full flow porting block G3/4



Page 7

840028-53KIT

Full flow porting block 3/4" PTF



Page 7

840028-68KIT

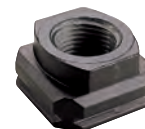
Full flow porting block G3/4



Page 7

840028-69KIT

Port Adaptors



Page 7

1/4 PTF	840015-01KIT
3/8 PTF	840015-02KIT
1/2 PTF	840015-03KIT
3/4 PTF	840015-04KIT
G1/4	840015-09KIT
G3/8	840015-10KIT
G1/2	840015-11KIT
G3/4	840015-12KIT

Pressure switch interface block (18D pressure switch) G1/4



Page 7

0337717000000000

Pressure switch 18D (0,5 ... 8bar) *1



Page 7

0881300

Digital pressure switch 51D (-1 ... 10 bar) *2



Page 8

0860810

Electronic Pressure Sensor – stand alone version *3



Q84G

IO-Link cables

Connection cable M8x1 for integrated digital pressure switch



Description	Cable length (m)	Model
M8 female to M12 male	0,6	NC-084FS-124MS-A
	1,0	NC-084FS-124MS-1
	2,0	NC-084FS-124MS-2
	5,0	NC-084FS-124MS-5
M8 female to free end	5,0	NC-084FS-00000-5

*1) Flanged version. For other pressure ranges, please see data sheet 5.11.001

*2) For other pressure ranges, please see data sheet 5.11.385

*3) Q84G stand alone electronic pressure sensor module see <http://s.norgren.com/digital-gauge-iodd> for data-sheet 8.900.905.

Service kits

Quick fill nipple



18-011-024

Lubricator bowl Guarded Poly



840025-52KIT

Lubricator bowl Metal with sight glass



840003-52KIT

Lubricator sight dome kit



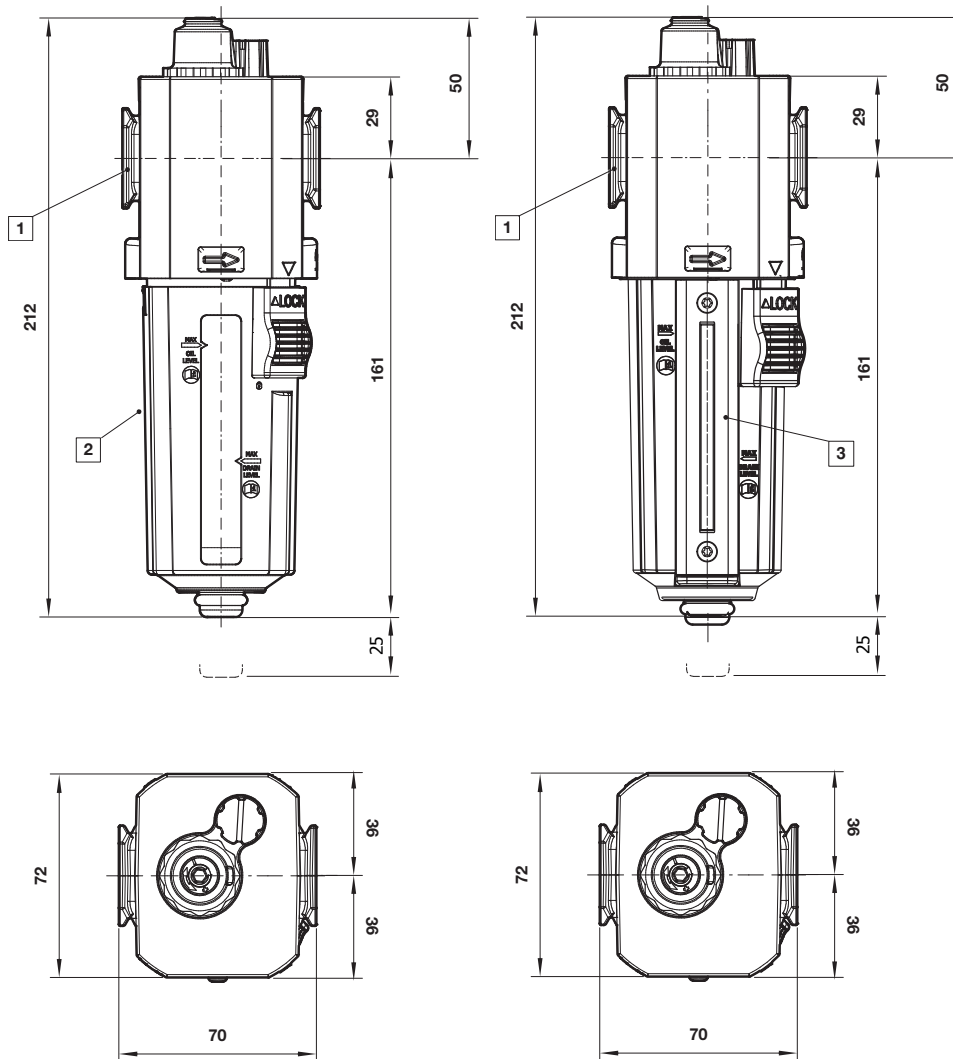
Micro fog (red)	840055-50KIT
Oil fog (green)	840055-51KIT

Dimensions

Dimensions in mm
Projection/First angle



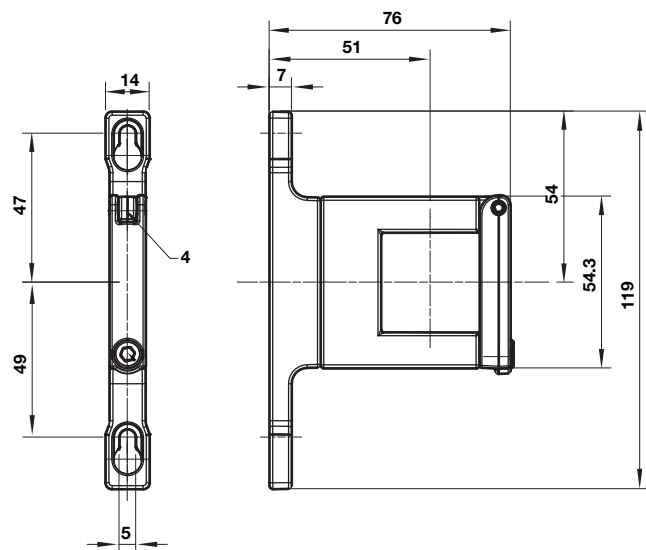
Plugged bowl



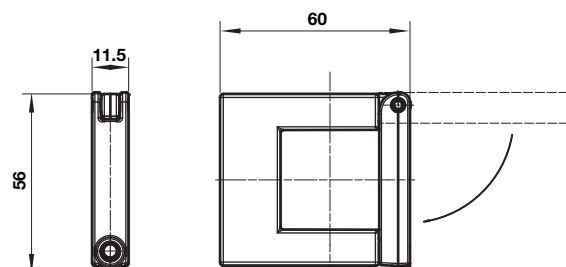
- 1 Main ports 3/8", 1/2" or 3/4"
(ISO G/PTF)
- 2 Transparent bowl with guard
- 3 Metal bowl with liquid level indicator lens

Accessories

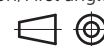
Quikclamp with wall bracket



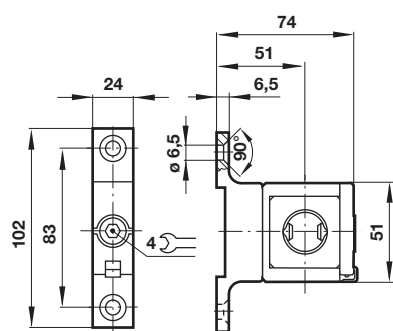
Quikclamp



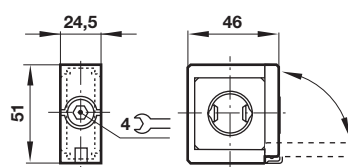
Dimensions in mm
Projection/First angle



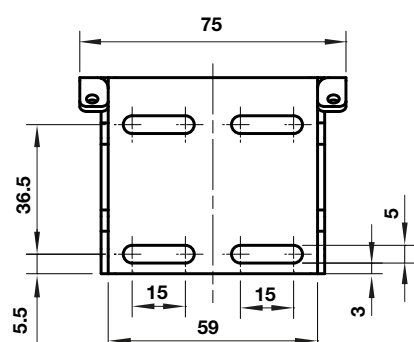
Hybrid-Quikclamp with wall bracket



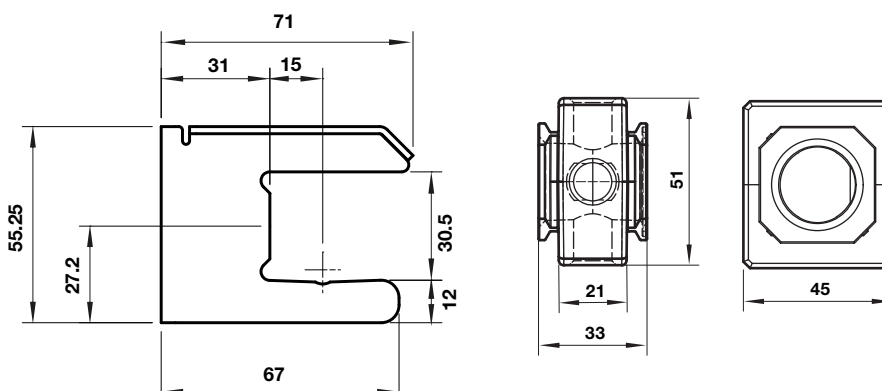
Hybrid-Quikclamp



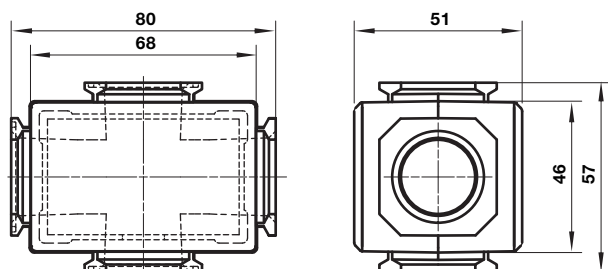
Mounting bracket



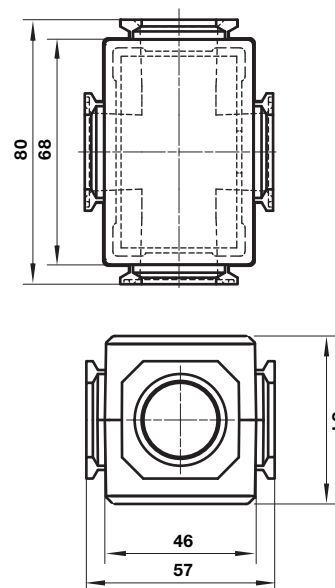
Pressure sensing block



Full flow porting block horizontal



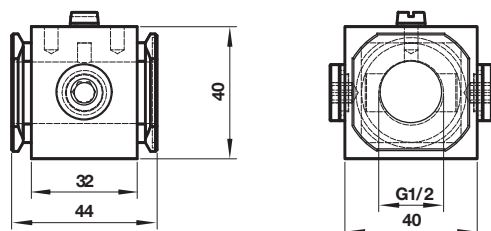
Full flow porting block vertical



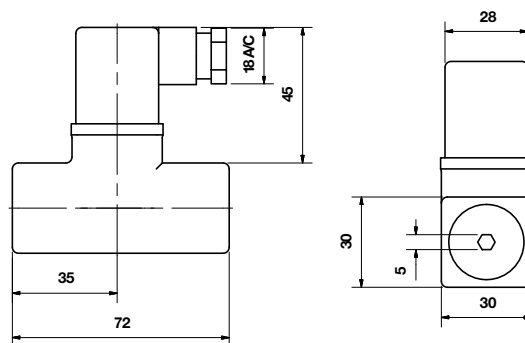
Dimensions in mm
Projection/First angle



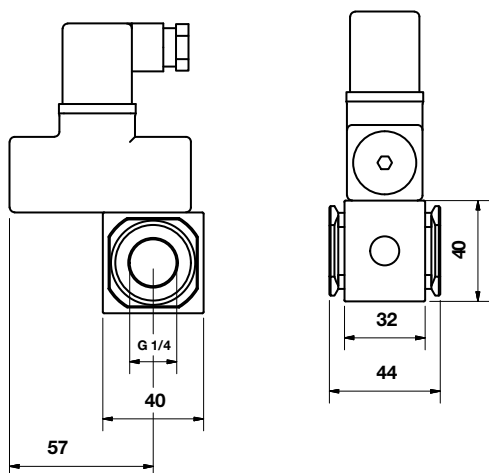
Porting block for 18D pressure switch



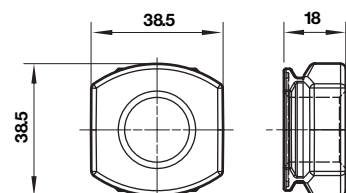
18D Pressure switch

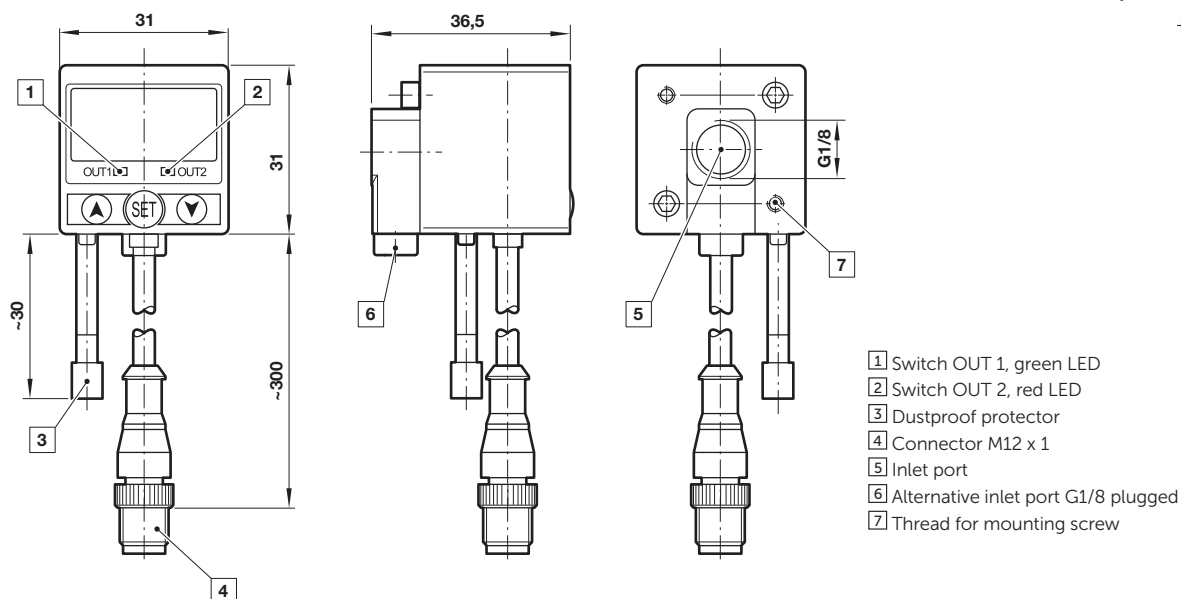


18D Porting block and
18D assembled



Pipe adaptor





Warning

These products are intended for use in industrial compressed air systems only. Do not use these products where pressures and temperatures can exceed those listed under **»Technical features/data«**.

Before using these products with fluids other than those specified, for non-industrial applications, life-support systems or other applications not within published specifications, consult Norgren Ltd.

Through misuse, age, or malfunction, components used in fluid power systems can fail in various modes.

The system designer is warned to consider the failure modes of all component parts used in fluid power systems and to provide adequate safeguards to prevent personal injury or damage to equipment in the event of such failure.

System designers must provide a warning to end users in the system instructional manual if protection against a failure mode cannot be adequately provided.

System designers and end users are cautioned to review specific warnings found in instruction sheets packed and shipped with these products.