

R72G, R72R - EXCELON® Modular System

Pressure regulators

- Port size: 1/4" or 3/8" (ISO G/PTF)
- Excelon design allows in-line or modular installation
- Balanced valve design for optimum pressure control
- Push to lock adjusting knob with tamper resistant accessory



Technical features

Medium:

Compressed air only

Maximum operating pressure:

20 bar (300 psi)

Pressure range:

Standard

0,3 ... 10 bar (4 ... 145 psi)

0,3 ... 4 bar (4 ... 58 psi) optional

0,3 ... 2 bar (4 ... 29 psi) optional

Port size:

G1/4, G3/8, 1/4 or 3/8 NPT

Gauge port:

Rc 1/8 with ISO G main ports

1/8 PTF with PTF main ports

Flow:

33 dm³/s maximum

At port size: 1/4"

Inlet pressure 10 bar (145 psi);

6,3 bar (91 psi) set pressure and a

Δp: 1 bar (14,5 psi) droop from set.

Return valve:

R72G – without return valve

R72R – with return valve

Ambient/Media temperature:

-34 ... +65°C (-29 ... +149°F)

Air supply must be dry enough to avoid ice formation at temperatures below +2°C (+35°F).

Materials:

Body: Die cast zinc

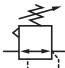
Bottom plug: Acetal

Bonnet: Acetal

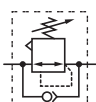
Valve: Brass

Elastomers: NBR

Technical data R72G - standard models

Symbol	Port size	Size	Pressure range (bar)	Adjustment	Weight (kg)	Model
	G1/4	Basic	0,3 ... 10	Knob	0,36	R72G-2GK-RMN
	G3/8	—	0,3 ... 10	Knob	0,36	R72G-3GK-RMN

Technical data R72R - Reverse flow

Symbol	Port size	Size	Pressure range (bar)	Adjustment	Weight (kg)	Model
	G1/4	Basic	0,3 ... 10	Knob	0,36	R72R-2GK-RMN
	G3/8	—	0,3 ... 10	Knob	0,36	R72R-3GK-RMN

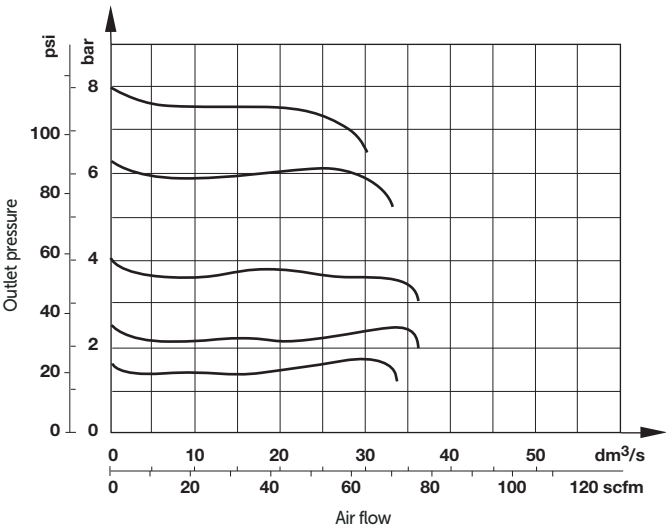
Option selector

Return valve		Substitute		Gauge		Substitute	
Without (standard)		G		With		G	
Integrated		R		Without (standard)		N	
Port size		Substitute		Outlet pressure adjustment range *2)		Substitute	
1/4"		2		0,3 ... 2 bar		C	
3/8"		3		0,3 ... 4 bar		F	
				0,3 ... 10 bar (standard)		M	
Thread form		Substitute		Diaphragm		Substitute	
PTF		A		Relieving (standard)		R	
ISO G parallel (standard)		G		Non relieving		N	


*2) Outlet pressure can be adjusted to pressures in excess of, and less than, those specified. Do not use these units to control pressures outside of the specified ranges.

Flow characteristics

Inlet pressure: 10 bar (145 psi)
Port size: 1/4"





Accessories


Universal mounting bracket	Quikclamp®	Quikclamp with wall bracket®	Neck mounting bracket	Panel nut
				
Page 4	Page 3	Page 3	Page 4	
4224-50	4214-51	4214-52	74316-50	4248-89
Tamper resistant kit	Quikmount pipe adaptor *1)	Porting block with three alternative 1/4" ports	2/2 Shut-off valves (for full technical specification see datasheet 8.160.600)	3/2 Shut-off valves (for full technical specification see datasheet 8.160.600)
				
Page 4	Page 3	Page 3	Page 4	Page 4
4255-51	G1/4: 4215-08	G1/4: 4216-52	G1/4: T72B-2GA-P1N	G1/4: T72T-2GA-P1N
	G3/8: 4215-09	1/4 PTF: 4216-50	G3/8: T72B-3GA-P1N	G3/8: T72T-3GA-P1N
	1/4 PTF: 4215-02		1/4 PTF: T72B-2AA-P1N	1/4 PTF: T72T-2AA-P1N
	3/8 PTF: 4215-03		3/8 PTF: T72B-3AA-P1N	3/8 PTF: T72T-3AA-P1N

*1) Please use a Quikmount pipe adaptor if the Quikclamp be mounted at inlet or outlet side.

Pressure switch

Porting block for pressure switch	Pressure switch (0,5 ... 8 bar)
	
0523109000000000	0881300000000000

Padlock

Padlock (brass) with two keys *1)

0613633000000000

*1) for shut-off valves and tamper resistant kit

Service kit

Service kit

R72G-KITR

Gauge

Center back connection, white face (for full technical specification see datasheet 8.900.900)



Pressure range
bar *1 Mpa psi

			Ø	Thread size	Model
0 ... 2,5	—	0 ... 36	40 mm	R1/8	18-015-886
0 ... 4	0 ... 0,4	0 ... 58	40 mm	R1/8	18-015-990
0 ... 10	0 ... 1	0 ... 145	40 mm	R1/8	18-015-989

*1) primary scale

Center back connection, black face for North America (for full technical specification see datasheet 8.900.900)
Pressure range



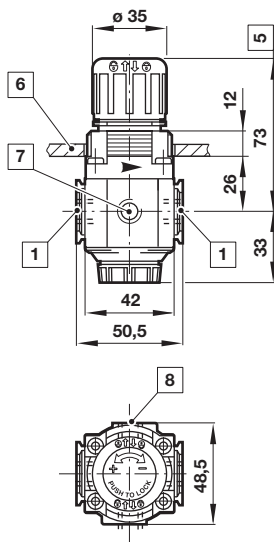
psig *1 bar Mpa

			Ø	Thread size	Model
0 ... 30	0 ... 2	0 ... 0.2	1.5" (40 mm)	1/8 NPT	18-015-214
0 ... 60	0 ... 4	0 ... 0.4	1.5" (40 mm)	1/8 NPT	18-015-211
0 ... 160	0 ... 11	0 ... 1.1	1.5" (40 mm)	1/8 NPT	18-015-212

*1) primary scale

Drawings

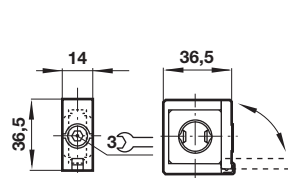
Dimensions in mm
Projection/First angle



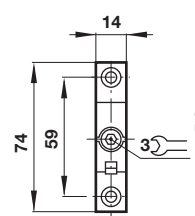
- 1 Main ports 1/4" or 3/8"
- 5 Reduces by 4 mm with knob in locked position
- 6 Panel thickness 0 ... 4 mm
- 7 Gauge port 1/8" plugged
- 8 Alternative gauge port 1/8" plugged

Accessories

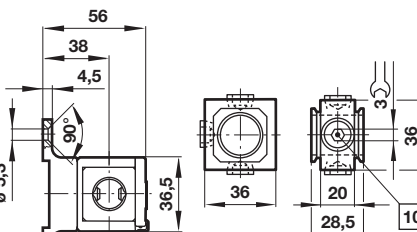
Quikclamp®



Quikclamp® with wall bracket

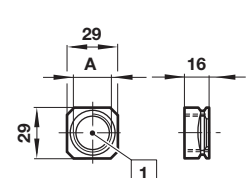


Porting block



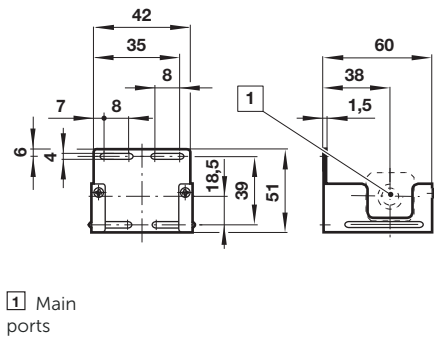
- 10 Ports (G1/4 or 1/4 NPT) plugged

Pipe adapter

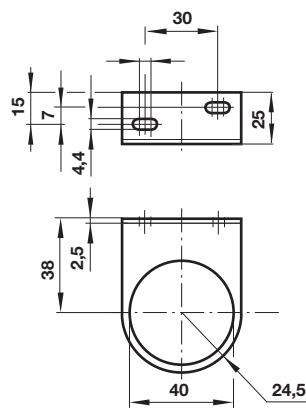


- 1 Main ports 1/4" or 3/8" (ISO G/PTF)

Wall mounting bracket

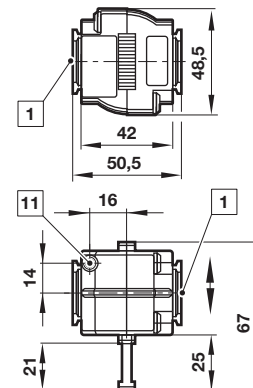


Neck mounting bracket

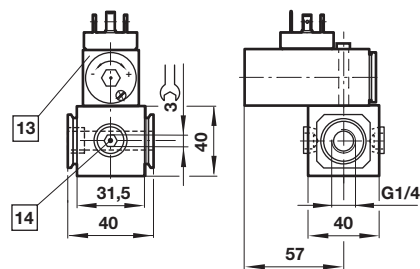


Shut-off valves

Dimensions in mm
Projection/First angle



Porting block for pressure switch



- 1 Main ports 1/4" or 3/8" ISO G/PTF
- 11 Exhaust port M5 at 3/2 valve only

- 13 Pressure switch is not in scope of delivery
- 14 Alternative G1/4 ports plugged

Warning

These products are intended for use in industrial compressed air systems only. Do not use these products where pressures and temperatures can exceed those listed under »**Technical features/data**«.

Before using these products with fluids other than those specified, for non-industrial applications, life-support systems or other applications not within published specifications, consult IMI Precision Engineering, Norgren Inc.

Through misuse, age, or malfunction, components used in fluid power systems can fail in various modes. The system designer is warned to consider the failure modes of all component parts used in fluid power systems and to provide adequate safeguards to prevent personal injury or damage to equipment in the event of such failure.

System designers must provide a warning to end users in the system instructional manual if protection against a failure mode cannot be adequately provided.

System designers and end users are cautioned to review specific warnings found in instruction sheets packed and shipped with these products.