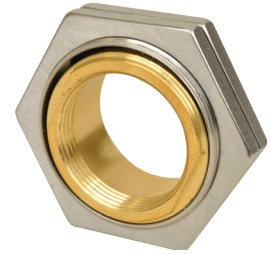


For mounting the NSS0810 Stud Sensor
Allows sensor to retract when stud is out of place
Allows sensor offset up to 10° off centerline of spring mount to locate misaligned studs

Technical Data
Maximum Axial Travel:

0.20" (5.1 mm)

Maximum Radial Misalignment:

0.04" (1.1 mm)

Maximum Angular Misalignment:

10°

Materials:

Housing - Stainless Steel

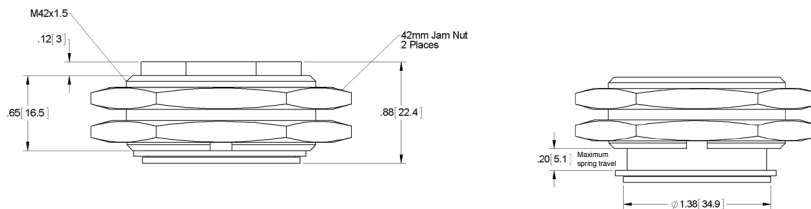
Slide - Brass

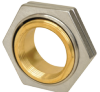

Spring, and snap ring - Steel

Mounting: M42 x 1.5 Thread

Initial Spring Force: 0.6 lbf. (2.7N)

Final Spring Force: 1.8 lbf. (8.0N)

Dimensional Information

Order Information

Spring Mount	Sensor w/cable
	
SAB30414	NSS0810


Spring Mount (SAB30414) with Stud Sensor (NSS0810)
Warning

Improper selection, misuse, age or malfunction of components used in systems can cause failure in various modes. The system designer is warned to consider the failure modes of all component parts and to provide adequate safeguards to prevent personal injury or damage to equipment or property in the event of such failure modes. System designers and end users are cautioned to consult instruction sheets and specifications available from the factory. The system designer/end user is responsible for verifying that all requirements for the application are met.

Proposition 65: These products may contain chemicals known to the state of California to cause cancer, or birth defects, or other reproductive harm.

Warranty

The products described herein are warranted subject to seller's Standard Terms and Condition of Sale, available at seller's website.