

- > Port size: 3/8" ... 3/4" (ISO G/NPT)
- > Quick release bayonet bowl
- > Excelon design allows in-line or modular installation with other Excelon products
- > Adsorbing type activated carbon element removes oil vapours and most hydrocarbon odours



### Technical features

#### Medium:

Compressed air only

**Maximum operating pressure:**  
17 bar (250 psi)

**Remaining oil content:**  
0,003 mg/m<sup>3</sup> max. at +21°C (69°F)

**Port size:**  
G3/8, G1/2, G3/4,  
3/8 PTF 1/2 PTF , 3/8 PTF

#### Flow:

13,3 dm<sup>3</sup>/s

To maintain stated oil content at  
port size: G1/2,  
Operating pressure:  
6,3 bar (91 psi)

**Bowl:**  
0,2 litre

#### Ambient/Media temperature:

-20° ... +65°C (-4° ... +149°F)

Air supply must be dry enough  
to avoid ice formation at  
temperatures below +2°C (+35°F).

#### Materials:

Body: Die cast aluminium

Metal bowl: Die cast aluminium

Element: Activated carbon &  
aluminium

Elastomers: CR & NBR

### Technical data - standard models

Symbol	Port size	Size	Bowl	Weight (kg)	Model
	G3/8	—	Aluminium	1,15	F74V-3GN-EMA
	G1/2	Basic	Aluminium	1,14	F74V-4GN-EMA
	G3/4	—	Aluminium	1,12	F74V-6GN-EMA

### Option selector

F74V-★★N-EMA

Port size	Substitute
3/8"	3
1/2"	4
3/4"	6

Thread form	Substitute
NPT	A
ISO G parallel (standard)	G

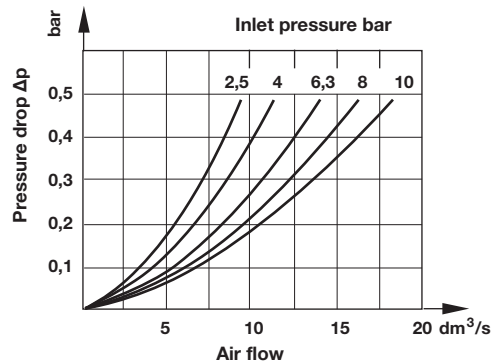
### Typical performance characteristics

Inlet pressure (bar)	Maximum flow dm <sup>3</sup> /s*
2,5	8,7
4	10,7
6,3	13,3
8	15,6
10	17,6








\* Maximum flow to maintain stated oil removal performance

### Flow characteristics

Port size 1/2"



**Accessories**

<p><b>Wall mounting bracket</b></p>  <p>Page 3</p> <p>4324-50</p>	<p><b>Quikclamp®</b></p>  <p>Page 3</p> <p>4314-51</p>	<p><b>Quikclamp with wall bracket®</b></p>  <p>Page 3</p> <p>4314-52</p>	<p><b>Quikmount pipe adaptor *1)</b></p>  <p>Page 3</p> <p>G3/8: 4315-10                  G1/2: 4315-11                  G3/4: 4315-12                  3/8 PTF: 4315-02                  1/2 PTF: 4315-03                  3/4 PTF: 4315-04</p>	<p><b>Porting block with three alternative 1/4" ports</b></p>  <p>Page 3</p> <p>G1/4: 4316-52                  1/4 PTF: 4316-50</p>	<p><b>2/2 Shut-off valves (for full technical specification see datasheet 8.200.600)</b></p>  <p>Page 3</p> <p>G 3/8: T74B-3GA-P1N                  G 1/2: T74B-4GA-P1N                  G 3/4: T74B-6GA-P1N                  3/4 PTF: T74B-6AA-P1N</p>	<p><b>3/2 Shut-off valves (for full technical specification see datasheet 8.200.600)</b></p>  <p>Page 3</p> <p>G 3/8: T74T-3GA-P1N                  G 1/2: T74T-4GA-P1N                  G 3/4: T74T-6GA-P1N                  1/2 PTF: T74T-4AA-P1N                  3/4 PTF: T74T-6AA-P1N</p>
---	---	---	---	--	--	---

\*1) Please use a Quikmount pipe adaptor if the Quikclamp be mounted at inlet or outlet side.

**Pressure switch**

**Porting block for pressure switch**



Page 4

0523110000000000

**Pressure switch (0,5 ... 8 bar)**



0881300000000000

**Padlock**

**Padlock (brass) with two keys \*1)**



0613633000000000

\*1) for shut-off valves

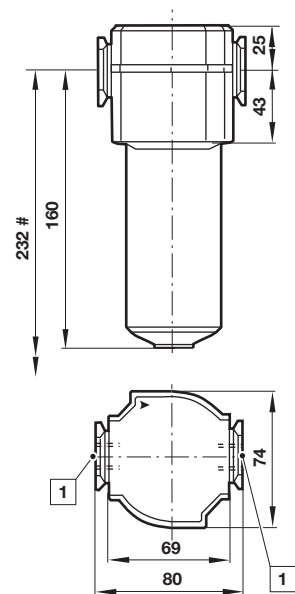
**Service kits**

**Service kit**



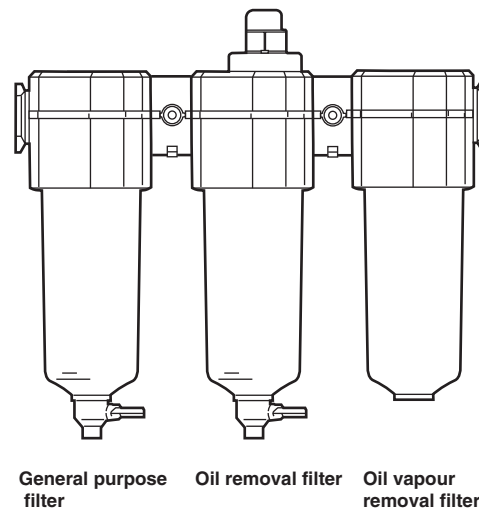
F74V-KITA0V

**Drawings**



**Oil vapour removal filters must be protected upstream by an oil removal filter.**  
**A typical assembly:**

Dimensions in mm  
 Projection/First angle

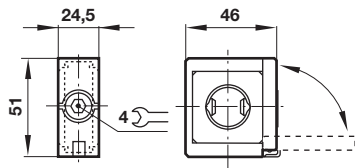
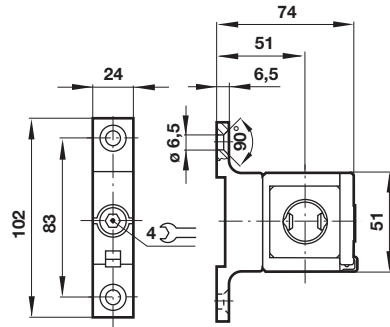
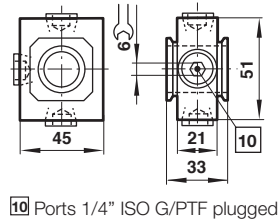
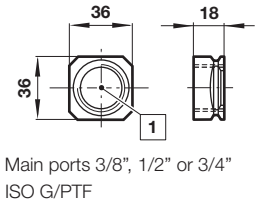


# Minimum clearance required to remove bowl

1 Main ports 3/8", 1/2" or 3/4"

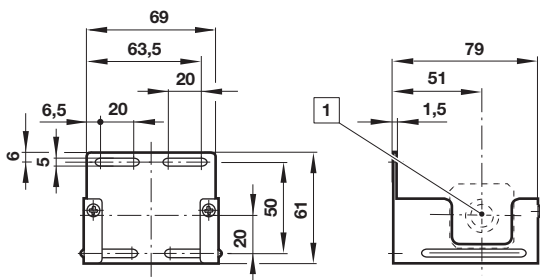
**Accessories**

 Dimensions in mm  
 Projection/First angle

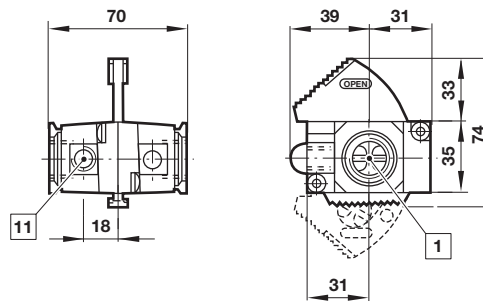
**Quikclamp®**

**Quikclamp® with wall bracket**

**Porting block**

**Pipe adapter**


1 Main ports 3/8", 1/2" or 3/4" ISO G/PTF

10 Ports 1/4" ISO G/PTF plugged

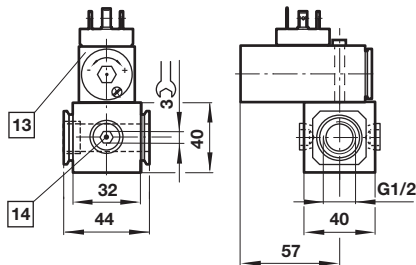
**Wall mounting bracket**


1 Main ports

**Shut-off valves**


1 Main ports 3/8", 1/2" or 3/4" ISO G/PTF

11 Exhaust port 1/8"

**Porting block for pressure switch**


13 Pressure switch is not in scope of delivery

14 Alternative G1/4 ports plugged

**Warning**

These products are intended for use in industrial compressed air systems only. Do not use these products where pressures and temperatures can exceed those listed under »Technical features/data«.

Before using these products with fluids other than those specified, for non-industrial applications, life-support systems or other applications not within published specifications, consult IMI Precision Engineering, Norgren Inc. Through misuse, age, or malfunction, components used in fluid power systems can fail in various modes.

The system designer is warned to consider the failure modes of all component parts used in fluid power systems and to provide adequate safeguards to prevent personal injury or damage to equipment in the event of such failure.

System designers must provide a warning to end users in the system instructional manual if protection against a failure mode cannot be adequately provided.

System designers and end users are cautioned to review specific warnings found in instruction sheets packed and shipped with these products.